

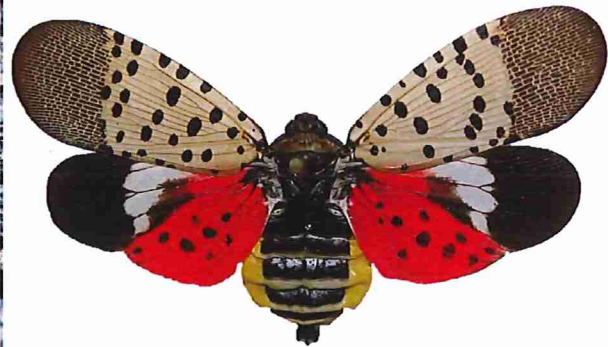
SALISBURY TOWNSHIP ENVIRONMENTAL ADVISORY COUNCIL

APRIL 18, 2018
START TIME IS 7:00 PM
LOCATION

SALISBURY TOWNSHIP MUNICIPAL BUILDING
2900 SOUTH PIKE AVE, ALLENTOWN PA
PHONE NUMBER 610-797-4000

SALISBURY TOWNSHIP ENVIRONMENTAL ADVISORY COUNCIL IS
HOSTING A WORKSHOP IN CONJUNCTION WITH LEHIGH COUNTY
AND PENN STATE UNIVERSITY EXTENSION OFFICE.

MAIN TOPIC IS THE SPOTTED LANTERNFLY



SPOTTED LANTERNFLY

\$16.7 billion in state forest products
\$944 million in nursery & landscape products
\$87 million in apples
\$28 million in grapes
\$19 million in peaches

are at risk.

