

# Salisbury Connections



VOLUME 2 ISSUE 1

WINTER/SPRING 2013

## Comprehensive Plan Update Charts Path for Township

In 2012, the Salisbury Township Comprehensive Plan received its first update in 20 years. Intended for updates every 10 years, the Comprehensive Plan provides the vision for township development.

Township Commissioners approved the updates at their regular meeting on September 27, 2012.

The plan focuses on five key areas ranging from land use and community development to environmental conservation and transportation. The plan addresses current conditions while being flexible enough to allow for future develop-

ments. “The goal of the plan is to maintain the unique identity of Salisbury Township,” said Cynthia Sopka, Director of Planning and Zoning.

Salisbury is a predominantly suburban

township nestled among South and Lehigh Mountains. The natural beauty of the mountains, combined with the suburban nature of the area, establishes Salisbury as a unique municipality among an increasing urban community drawing new residents to the area. The revised plan protects this identity by expanding conservation districts



*The Comprehensive Plan proposes new land use overlays allowing the Township to better manage growth at the Lehigh Valley Health Network Cedar Crest Campus Location.*

while also augmenting current commercial districts.

The plan includes several land use changes along South Mountain, mainly from medium low density residential to conservation residential in an effort to conserve the natural characteristics of the mountain. Other changes include changing

*(Continued on page 2)*

## Planning a Brave New Future for Lindberg Park

The Salisbury Township Lindberg Park Study Committee held their second public hearing on December 10, 2012 at the Township Municipal Building.

The Committee is tasked with developing a plan to give Lindberg Park a modern facelift, occurring in several phases over the next

decade. Based on needs identified in the Salisbury Township Parks, Recreation, and Open Space plan, in 2011 the township began creating a Lindberg Park Master Plan and Neighborhood Connections Study. Funded through a grant from the Department of Conservation of Natural Resources, the plan examines the current uses and capabili-

ties of the park and the desired uses and capabilities of the park.

The \$22,400 DCNR grant is a Community Conservation Partnership Program emphasizing community projects and collaboration. In that spirit, the Committee is comprised of town-

*(Continued on page 5)*

### INSIDE THIS ISSUE:

<b><u>Comprehensive Plan Update</u></b>	<b>1</b>
<b><u>New Vision Planned for Lindberg Park</u></b>	<b>1</b>
<b><u>Public Works Update</u></b>	<b>2</b>
<b><u>Hurricane Sandy Feature</u></b>	<b>3</b>
<b><u>Busy Year for Police</u></b>	<b>4</b>
<b><u>Important Dates</u></b>	<b>4</b>
<b><u>Recycling Policies Updates</u></b>	<b>5</b>
<b><u>Grease Trap Ordinance</u></b>	<b>6</b>
<b><u>Frequently Asked Questions</u></b>	<b>6</b>

## Busy Season for Public Works Comes to a Close, New Projects on the Horizon

The Department of Public Works closed a busy project season this fall. Recent projects ranged in size and scope from eliminating a sewer pumping station connection to restoring basketball courts.

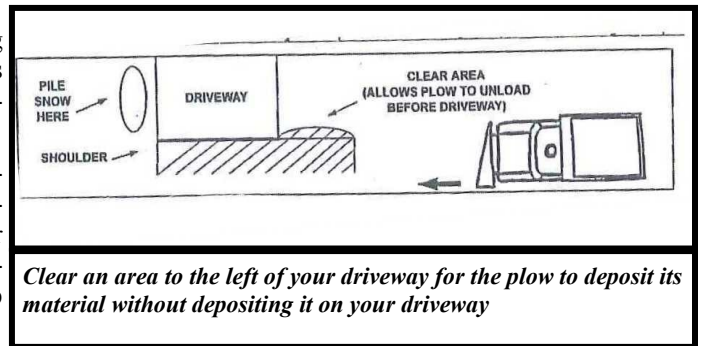
In western Salisbury, Salisbury and South Whitehall townships worked together to eliminate the sewer pumping station at Patricia Drive, replacing it with a gravity-driven connection to the South Whitehall sewer system. Rather than being forced back uphill to reconnect with the Salisbury system, area sewage will now flow into the South Whitehall system, easing maintenance requirements and costs. As an added bonus, area homeowners get to experience a freshly paved Lincoln Avenue.

Lindberg Park also got its share of attention receiving resurfaced and revitalized basketball and tennis courts while streets throughout the Township received replacement water mains.

The Public Works Department looks forward to another productive year in 2013. On tap for 2013 is a project on Maumee Avenue to extend the stormwater sewer system from Salisbury Road to Susquehanna Street creating a new drainage system and eliminating sump pump

connections to the existing system. The Department also plans to install a new water main on south Ellsworth Street, changing the system from a dead-end line abutting Allentown to a system that loops around allowing access from both sides. Finally, the Township road program will be targeting mountain roads, including Black River Road, E. Rock and W. Rock Roads, for repaving.

As the winter plowing season arrives, Public Works Director John Andreas suggests residents clear a portion of the road offset before their driveway so the plow does not empty its contents back into residents' driveways, blocking it. (See diagram below)



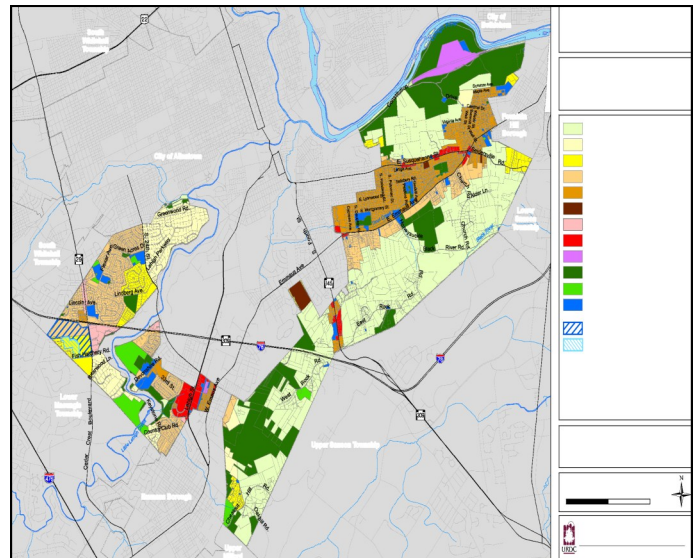
## Comprehensive Plan Update Charts Path for Township

*(Continued from page 1)*

areas from medium density and medium high density residential to low density and medium density districts.

The Plan also addresses the campus of the Lehigh Valley Health Network (LVHN) on Cedar Crest Blvd and potential future development of its facilities. The new Plan proposes two districts, a “Health Care Overlay” district and a “Transitional Overlay” district, for the LVHN campus. The districts are designed to manage growth at the LVHN campus and encourage physical buffer zones to dampen noise and limit lighting impacts to the residential neighborhood behind the hospital along Fish Hatchery Road by restricting building height and use. The land use rules proposed recognize the institutional nature of the hospital while allowing the Township to better control growth.

More information on the Comprehensive Plan, as adopted, can be found on the Township website at [www.salisburytownship.org/info\\_comprehensive\\_plan.shtml](http://www.salisburytownship.org/info_comprehensive_plan.shtml)



**Comprehensive Plan Future Land Use Map**

## Hurricane Sandy Blows Through Township

Hurricane Sandy blew threw the township on October 29, 2012 causing much damage and disruption, but thankfully, no casualties. The effects of the storm were mostly limited to power outages and property damage.

The Township's official response to the storm began at 7:00 AM on October 29th when the Police Department entered into an emergency operating condition and deployed additional patrol and supervisory units. At 3:00 PM, the Salisbury Township Emergency Operations Center and Township Emergency Management Department went active. Emergency Management Director Jeffrey Tapler began coordinating police, fire and public works units in response to storm calls. The Fire Companies for both Eastern and Western Salisbury Township deployed in full force to respond to calls and Public Works Director John Andreas remained on duty throughout the storm, rotating work crews to ensure personnel response. Personnel from the Police, Fire and Public Works departments responded to 83 separate calls over the course of 28 hours.

Over 45 trees were reported down, blocking roads throughout the township. At one point, trees blocked 19 roads in the Township. In addition to trees, crews faced downed power lines and poles blocking roads or draped over homes and other buildings, contributing to power outages affecting homes, businesses and the Township Municipal offices.

At 3:00 PM on October 30th, the Emergency Operations Center officially closed down as officials embarked on a post-storm survey of damages throughout the Township.

As late as October 31st, 6,231 residences remained without power and E. Rock and Honeysuckle Roads remained closed due to downed power lines.

Township Manager Randy Soriano praised the efforts of the local police, public works, fire and emergency personnel.



*This downed tree on Ehrets Lane demonstrates the type of damage and impact caused by Sandy.*

### In Case of Downed Trees

- It is common for powerful storms to bring down trees. These downed trees can threaten utility lines, roads, homes and other structures.
- Utility Companies must clear trees threatening a utility line (electric, gas, water, etc.)
- However most utilities will only clear the part of the tree threatening the line, leaving the owner to remove the rest.
- Property owners should contact their utility providers and let them evaluate how much of the tree needs to be removed.
- **BE PREPARED TO BEAR THE COST OF REMOVING THE REST OF THE TREE.**
- Trees in the Right of Way (Shade Trees) must be replaced whether downed by the storm or removed by the owner after the storm.
- For questions regarding shade trees and tree removal, contact the Code Enforcement Officer at 610-797-4000 or email [Snicolo@salisburytownship.org](mailto:Snicolo@salisburytownship.org)



## 2012 a Busy Year for Township Police



**New police cruiser outside the Police Department Headquarters**

Township Police officers certainly had their work cut out for them in 2012. They responded to over 7,002 dispatched calls, issued 6,105 incident reports and spent nearly 290 hours in court. The officers made 872 traffic arrests and 375 non-traffic arrests. While the police investigated two homicides, by far the most common incident was theft with over 200 reported thefts throughout the Township. The police force handled most of these events while operating

with a vacancy. Detective Brian Klimowicz retired in early 2012 resulting in the promotion of Officer Kevin Kress to fill the role, leaving an opening on the patrol staff. This opening will be filled this year.

Last spring, K-9 Officer Jason Laky put together a fundraiser for the family of the late Berks County Sheriff's Deputy Kyle Pagerly. Pagerly was killed in June 2011 serving a warrant at a home in Albany Township.

The Department also engaged in a number of grant-funded traffic safety programs. The Department annually receives money from the Lehigh County Casino Grant fund supporting increased patrols and checkpoints along the casino traffic corridor within Salisbury leading to the Bethlehem Sands. The department also participates in Aggressive Driving and DUI Enforcement grant programs, provided by the Pennsylvania Department of Transportation.

## Public Notices and Dates

### 2013 Office Closings

- **New Year's Day**, Tuesday, January 1, 2013
- **President's Day**, Monday, February 18, 2013
- **Good Friday**, March 29, 2013
- **Independence Day**, Thursday, July 4, 2013
- **Labor Day**, Monday, September 2, 2013
- **Veteran's Day (Observed)**, Monday, November 11, 2013
- **Thanksgiving Day & Day After**, Thursday, November 28, 2013 & Friday, November 29, 2013
- **Christmas Eve**, Tuesday, December 24, 2013
- **Christmas Day**, Wednesday, December 25, 2013
- **New Year's Day 2014**, Wednesday, January 1, 2014

### Meeting Schedules

- **Board of Commissioners Meetings**: 7:00 PM, 2nd and 4th Thursday of each month
- **Planning Commission Meetings**: 7:30 PM, 2nd Tuesday each month
- **Zoning Hearing Board Meetings**: 7:00 PM, 1st Tuesday each month
- **Recreation Advisory Committee**: 7:30 PM, 3rd Monday of every other month
- **Environmental Advisory Council**: 7:00pm, 3rd Wednesday every month

## New Recycling Policies

The passage of Pennsylvania House Bill 708, the "Covered Device Recycling Act" meant that beginning January 1, 2013, Pennsylvania landfills would no longer be able to accept TV's or computer equipment.

As a result Waste Management is unable to pick up things such as TV's, laptops, computers, monitors, CPU's, printers, scanners, keyboards, mice, speakers, cables or batteries. These items, if placed at the curb for pickup will be left at the curb per a notice from Waste Management.

The Waste Management notice indicated that households and small business owners (<50 employees) have access to free TV and computer recycling. More information about electronics recycling can be found through Waste Management's website or the PA Department of Environmental Protection website:

(<http://wmecyclesinpa.wm.com/index.jsp>)  
([www.depweb.state.pa.us](http://www.depweb.state.pa.us))

Now, for a bit of good news. Residents may now include cartons in their weekly recycling collection. Milk, juice and other cartons will now be accepted by Greenstar Recycling, the processing center your recyclables are processed through. Be sure the container is empty of all liquid, remove the plastic cap (if any) and do not flatten when setting out.

### SAVE THE DATE!

**Lehigh County will be hosting a Spring "Anything with a Plug" electronics recycling event on Saturday, April 13, 2013 from 9:00 AM until 12:00 Noon. at any of the following three locations:**

- **(Parking lot E) at LCCC in Schnecksville**
- **Parking lot of Olympus America Inc., 3500 Corporate Parkway, Center Valley**
- **Parking lot of Lowe's, 1235 Martin Court, Bethlehem**

**Visit [www.salisburytownship.pa.org](http://www.salisburytownship.pa.org) for more info on acceptable items .**

**Franko Farm and Devonshire Drop  
-Off Centers are CLOSED for the  
season and will re-open in March**

### CARTONS ARE RECYCLABLE!

Cartons can now  
be recycled.  
Simply empty  
your drink, juice,  
or milk cartons  
and place in the  
recycling bin.

As a reminder, there is no curbside collection of yard waste or grass clippings. Residents are instructed to take yard waste and grass to the Township drop off centers at Devonshire and Franko Farm during their scheduled hours of operation.

## Planning a Brave New Future for Lindberg Park

(Continued from page 1)

ship officials as well as representatives from Lehigh Valley Health Network, St. Thomas



The pavilion at Lindberg Park will see some updating in the new plan

Moore Parish, residents, neighborhood and youth representatives, County planning representatives and representatives from the City of Allentown. Planned changes include updates to the playground facilities, installation of a fitness trail and the possibility of connecting Lindberg Park via current easements to Lehigh Parkway in Allentown.

The development of the Park is divided into 11 phases. Phase I will begin with work on a bituminous perimeter trail and installation of crosswalks and striping. The development of the remaining phases is expected to

proceed with the installation of curbing ramps, fencing, restroom and pavilion upgrades, baseball field renovations including the installation of a baseball equipment storage shed, rain gardens, a bike lane, renovation of parking lots, and planting of a tranquility garden. Funding for Phase I of the project will be partially from a Lehigh County Green Futures Grant. The Township intends to pursue an additional grant from DCNR to use as matching funds.

**Salisbury Township Municipal Building**

2900 S. Pike Ave  
Allentown, PA 18103  
Contact: 610-797-4000 (Phone)  
610-797-5516 (fax)  
info@salisburytownship.org  
www.salisburytownship.org

**Salisbury Township Police Department**

3000 S. Pike Ave  
Allentown, PA 18103  
Non-Emergency: 610-797-1447  
Emergency: 911

**TOWNSHIP  
ADMINISTRATION**

- **Township Manager:** Randy Soriano
- **Director of Finance/Assistant Manager:**  
Cathy Bonaskiewich
- **Chief of Police:** Allen Stiles
- **Director of Planning and Zoning:**  
Cynthia Sopka
- **Director of Public Works:** John Andreas
- **Tax Collector/Treasurer:** Linda Minger

**SALISBURY TOWNSHIP  
BOARD OF COMMISSIONERS**

**James Brown, President**  
1714 Crownwood St  
610-791-9113  
Ward 4

**Robert Martucci, Jr., Vice President**  
1763 New York Ave  
610-797-9798  
Ward 1

**James Seagraves, President Pro-  
Tempore**  
1532 Maumee Ave  
610-791-1841  
Ward 2

**Joanne Ackerman**  
2572 Green Acres Dr  
610-432-3067  
Ward 5

**Debra Brinton**  
2011 Cypress Ave  
610-791-4044  
Ward 3

**New Grease Traps for Commercial Properties**

Grease Trap Ordinance #10-2011-569, adopted in October 2011, aims at reducing the amounts of fats, oils and grease contributed to the Township sewer system by certain types of commercial and industrial facilities. The ordinance requires these facilities to install grease traps on their property. The ordinance applies to industrial and commercial users that operate more than 15 days per calendar month including, manufacturing, equipment service, automotive repair, food service, car wash, commercial garage and other similar facilities.

Salisbury Township is party to a multi-municipal agreement regarding sewage treatment. The Township partners with South Whitehall Township as well as the City of Allentown for sewage transport and treatment. Past studies show that extra-strength discharges place more burden on the system resulting in a higher charge for use of the system, a charge that would be unreasonable to pass on to customers.

In response to complaints from Allentown and South Whitehall, the Township now requires that commercial institutions install and maintain grease traps to reduce the amount of fats, oils, or grease discharged into the sanitary sewer system. These systems can take many forms and must provide the means to separate fats, oils, and grease from the wastewater being contributed to the sanitary sewer system. These systems must include sampling ports and owners will be responsible for testing their wastewater discharge twice a year, no later than June 1st and December 31st each year.

New, renovated or altered facilities are required to have a new Industrial Waste Discharge permit in order to connect to the sewer system or face fines and penalties.

While the ordinance only applies to commercial and industrial facilities, residents are encouraged to not pour used oils, grease, or fats down the drain but instead dispose in a coffee canister and place with the trash.

**Frequently Asked Questions**

Township officials provide answers to some of the questions frequently received by the Township offices.

**1. What is a Zoning Permit and when is it required?**

Zoning Permits are required for any erection, construction, movement, placement or extension of a structure, building or sign that would affect impervious (does not absorb water) coverage of any plot of land. Permits would be required for projects like installing or expanding a paved driveway, patios, tent-type storage structures, walkways, sheds, etc.

A permit is also required to change the use of a building. For example, if a commercial property used to sell shoes were to close down and be turned into a coffee shop, a zoning permit would be required for the re-purposing of the property, despite no new structures being built.

**2. Does the Township have a record of my property lines?**

The Township maintains property plans, including lot dimensions and most times can provide a plot plan showing foundations. However, a land surveyor may be necessary to locate and identify lot lines, particularly if

boundary pins cannot be found. Property line disputes are considered a private matter.

**3. What should I do if my neighbor has placed his fence too close to the property line?**

If a permitted fence or other structure is placed too close to a neighboring lot line, the burden of proof is on the party disputing the placement (i.e. the burden of proof would be on you if your neighbor built his fence too close to the property line).

Each structure is approved based on information provided by the applicant, and he or she is required to submit accurate information. If a structure is found to violate the setback requirement, a Violation Notice will be sent requiring the applicant to move the structure within 30 days.

**4. Is soliciting permitted in the Township?**

Soliciting is permitted; however, a license is required. Licenses can be acquired by contacting the Township.

**5. What if my neighbor has high grass or an accumulation of trash or junk?**

The Township will take enforcement action for grass and weeds exceeding 12" in height, as well as an accumulation of trash or junk.